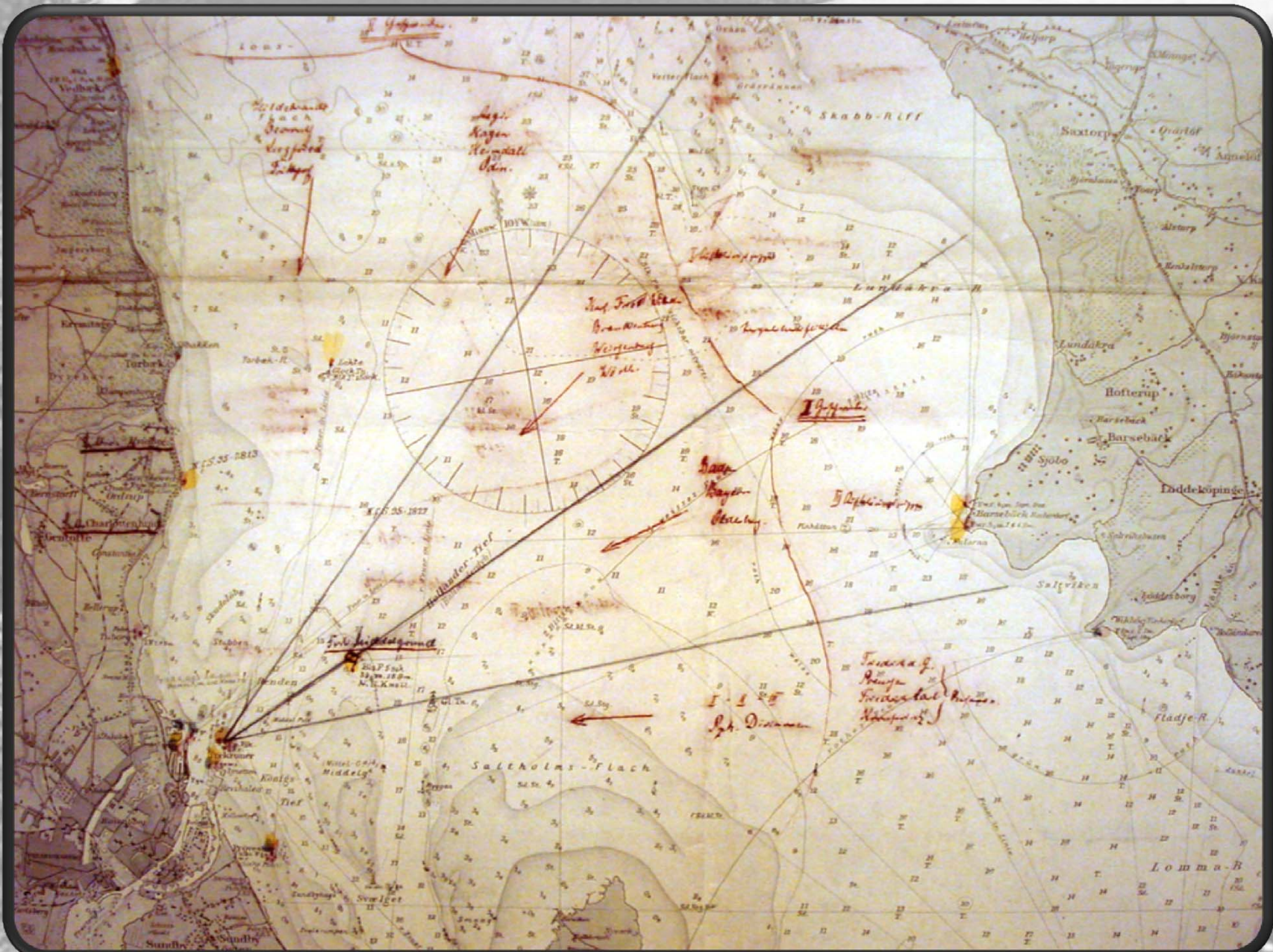


A black and white historical photograph showing a group of Danish soldiers in a trench during the First World War. The soldiers are wearing dark uniforms and caps, and are positioned in a trench that has been dug into a field. In the background, a white house with a dark roof is visible, surrounded by trees. The overall scene depicts the trench warfare conditions of the era.

Danmark og 1. Verdenskrig

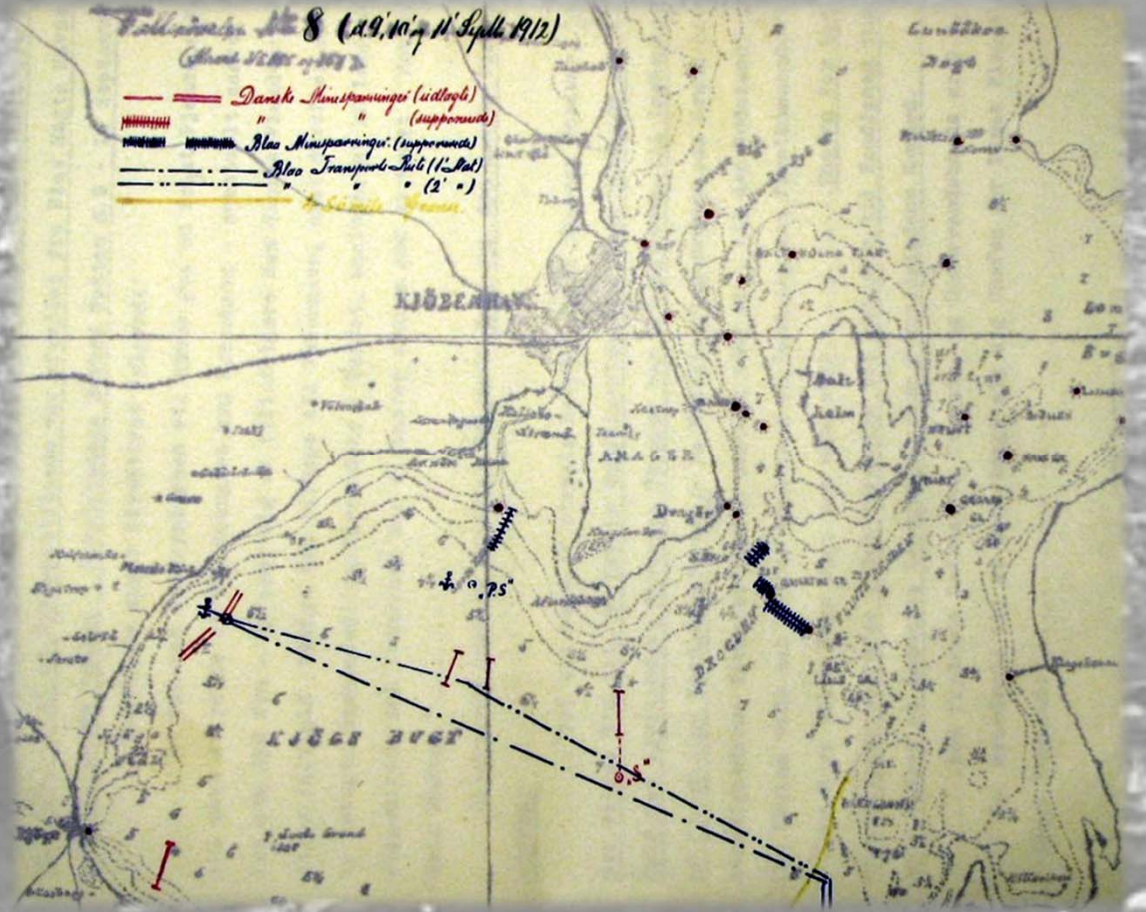
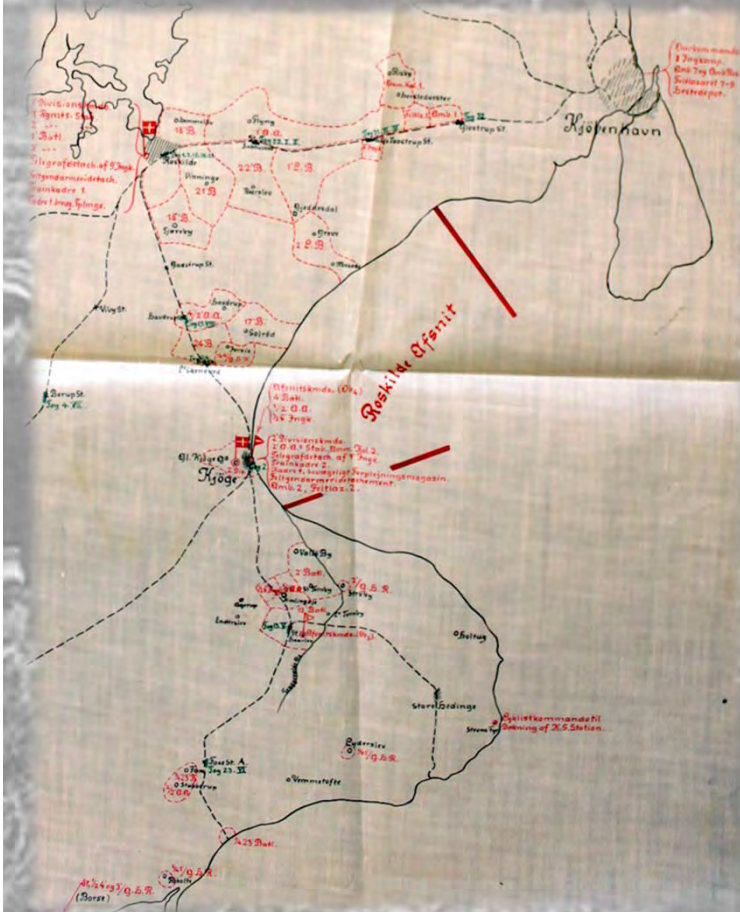
Tysk planlægning mod Danmark 1892-1904



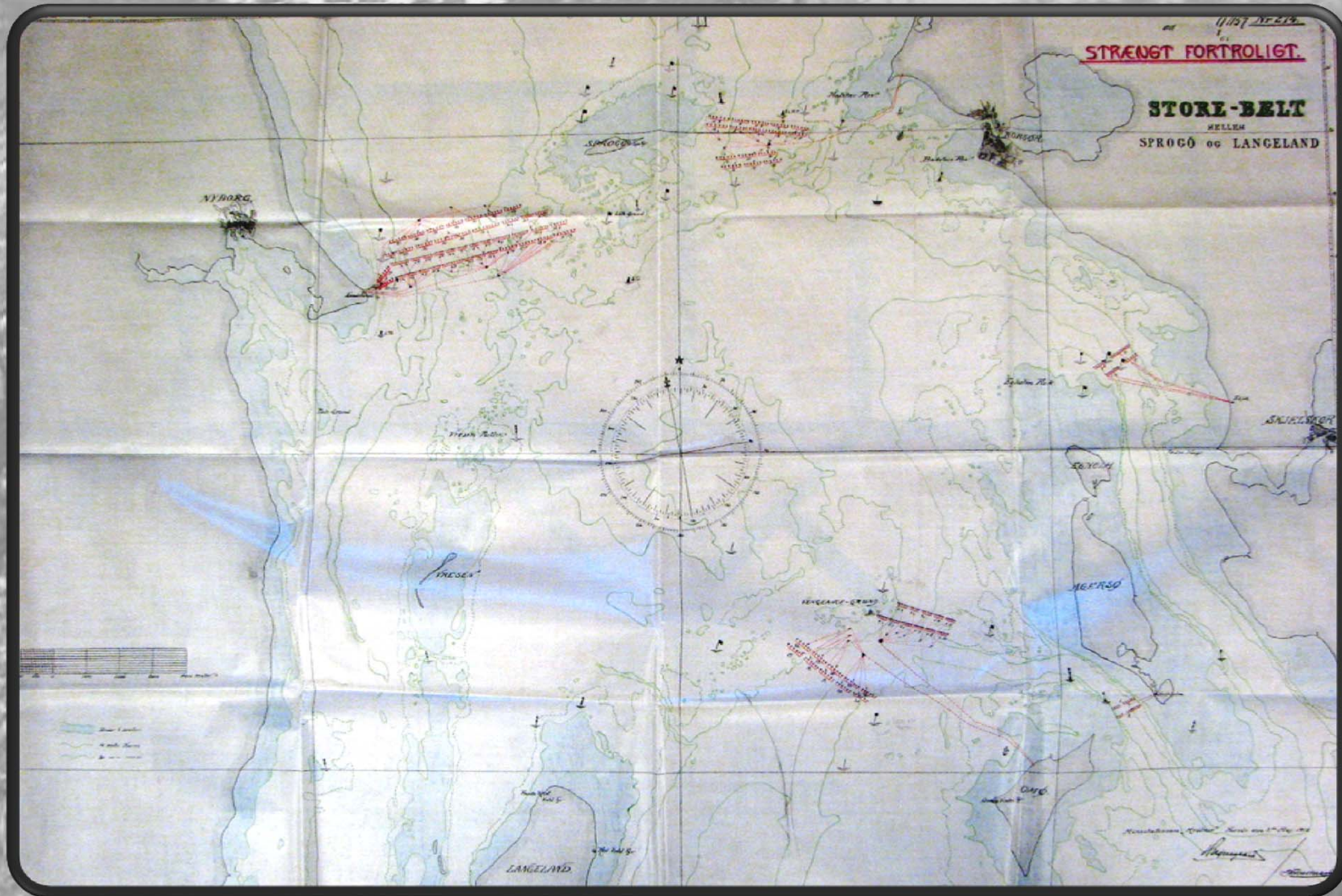
Den tyske hærs sikring af dansk neutralitet fra 1905-06



Fastlæggelse af planen for Sjællands forsvar mellem hæren og flåden 1910-12



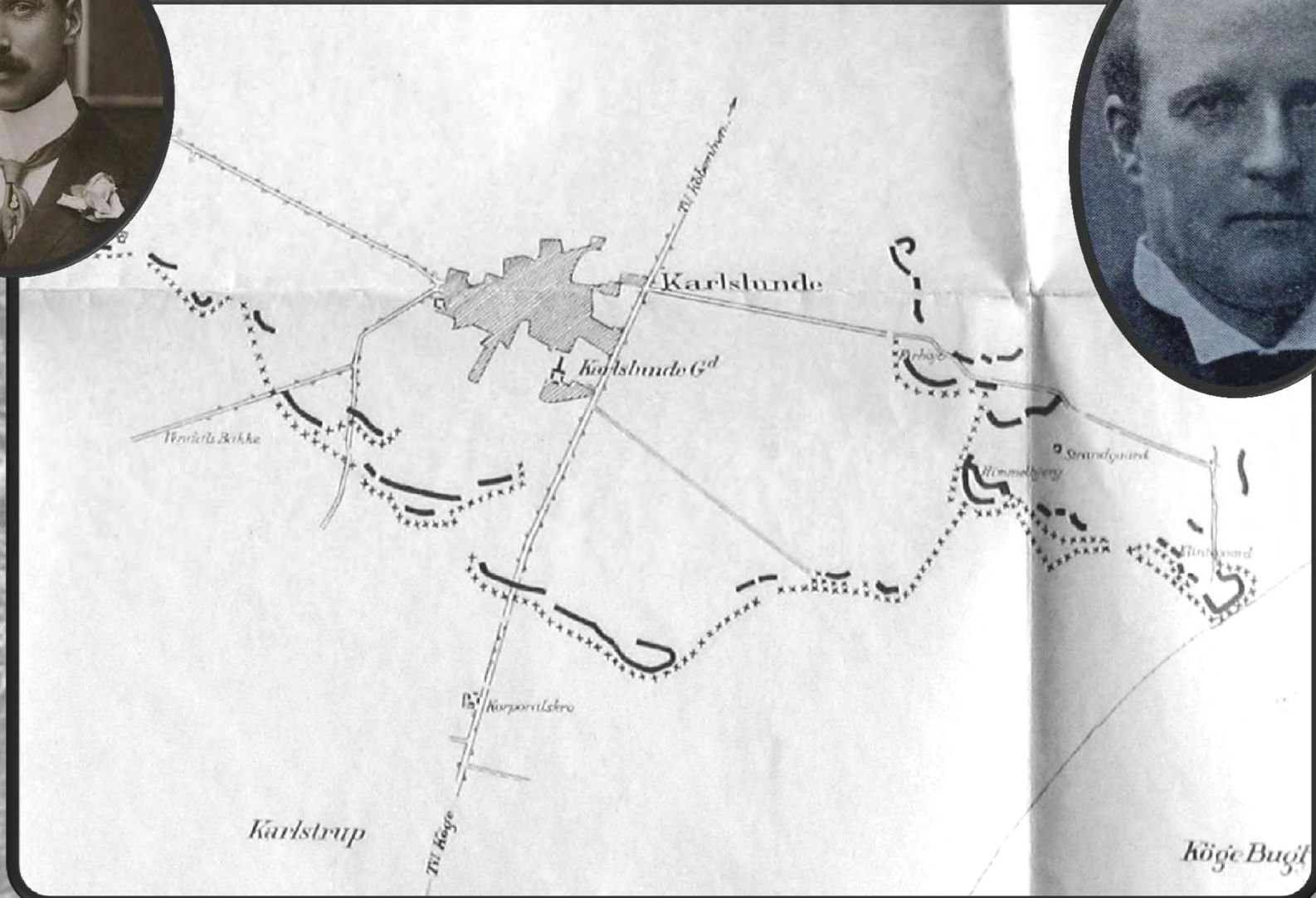
Den forstilte krise 5. august 1914



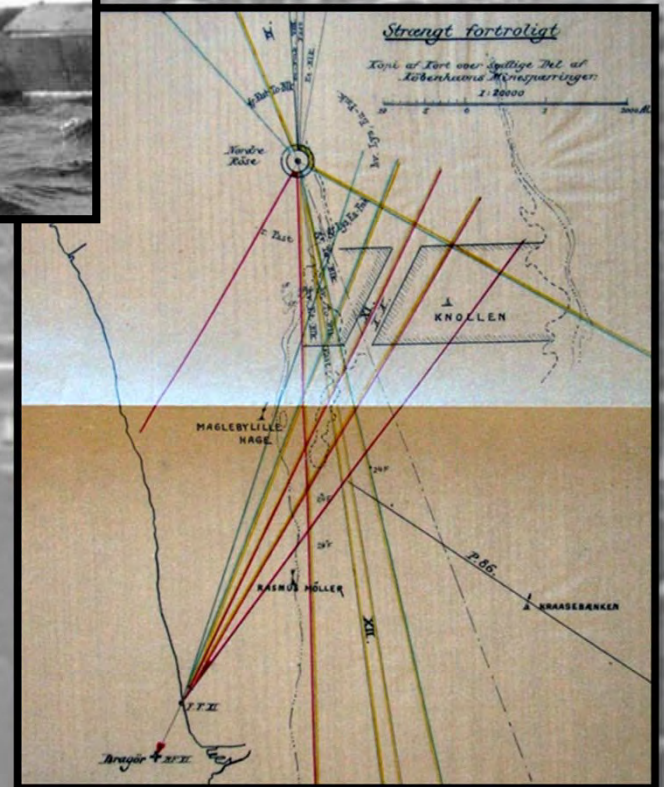
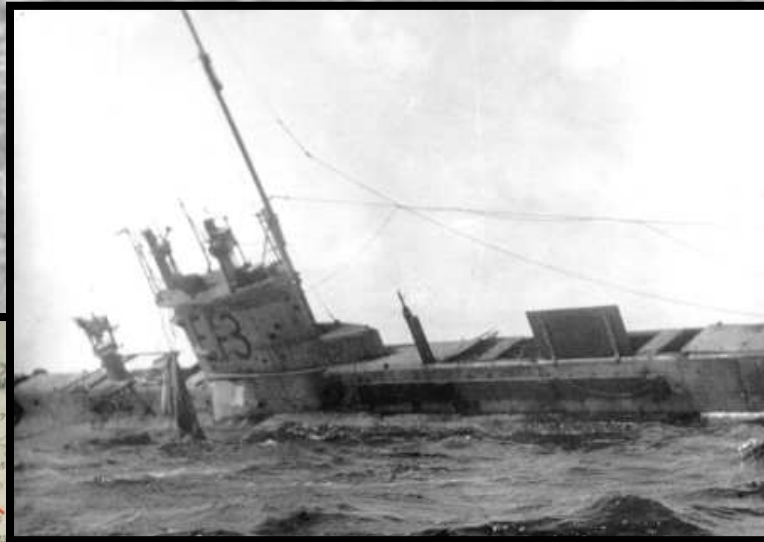
Uenigheden om reaktionen på den nye bombardementstrussel mod hovedstaden efteråret 1914



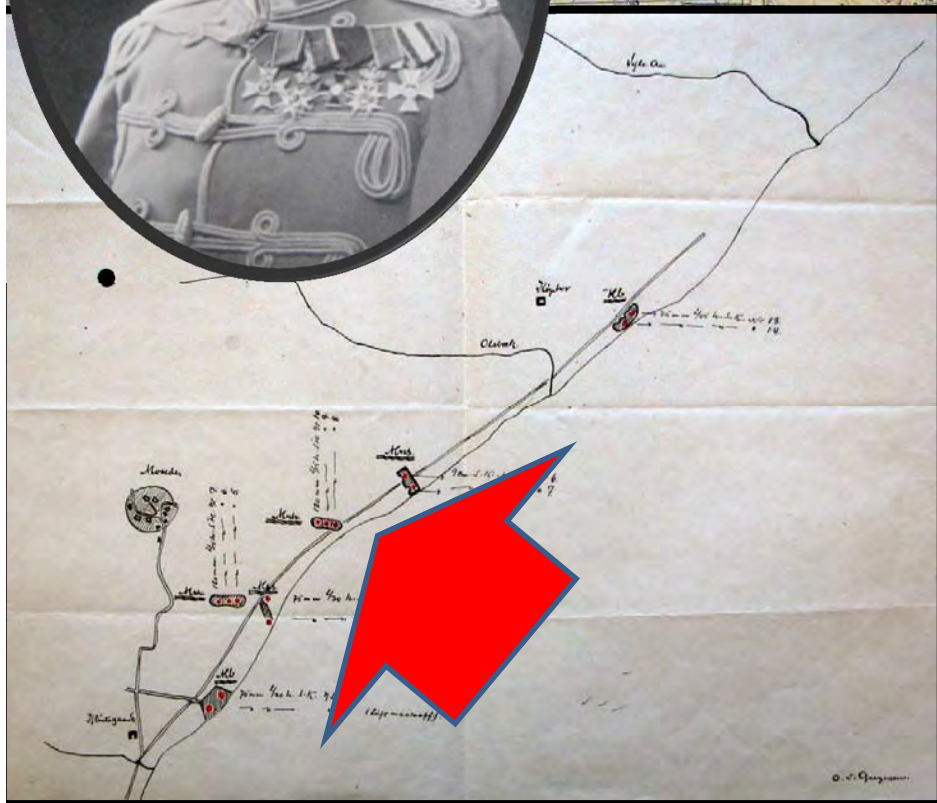
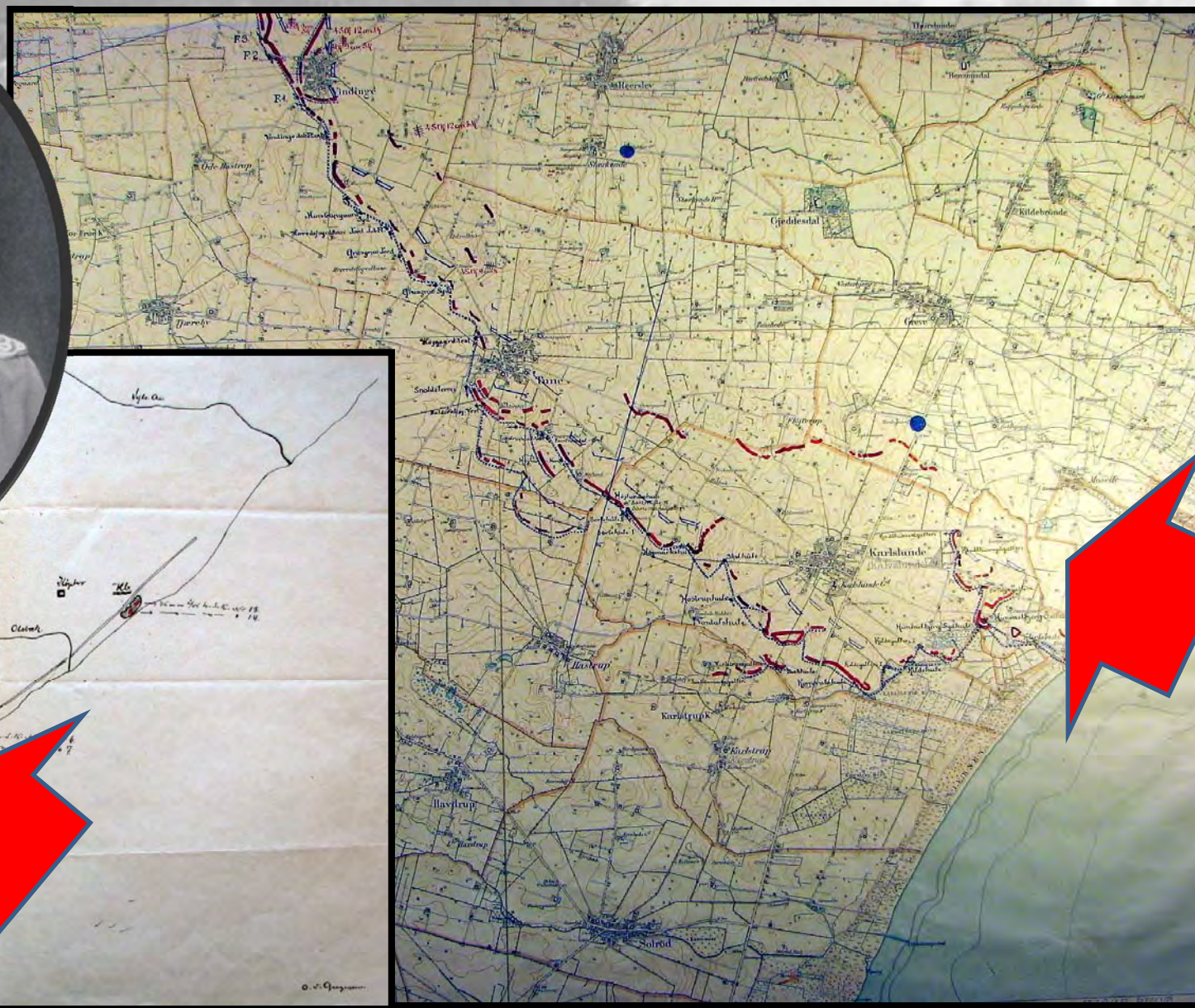
Ammunikionskrisen, reduktionen af sikringsstyrken og Tunestillingen



De britiske undervandsbåde i Østersøen og lukningen af Øresund i begyndelsen af 1916

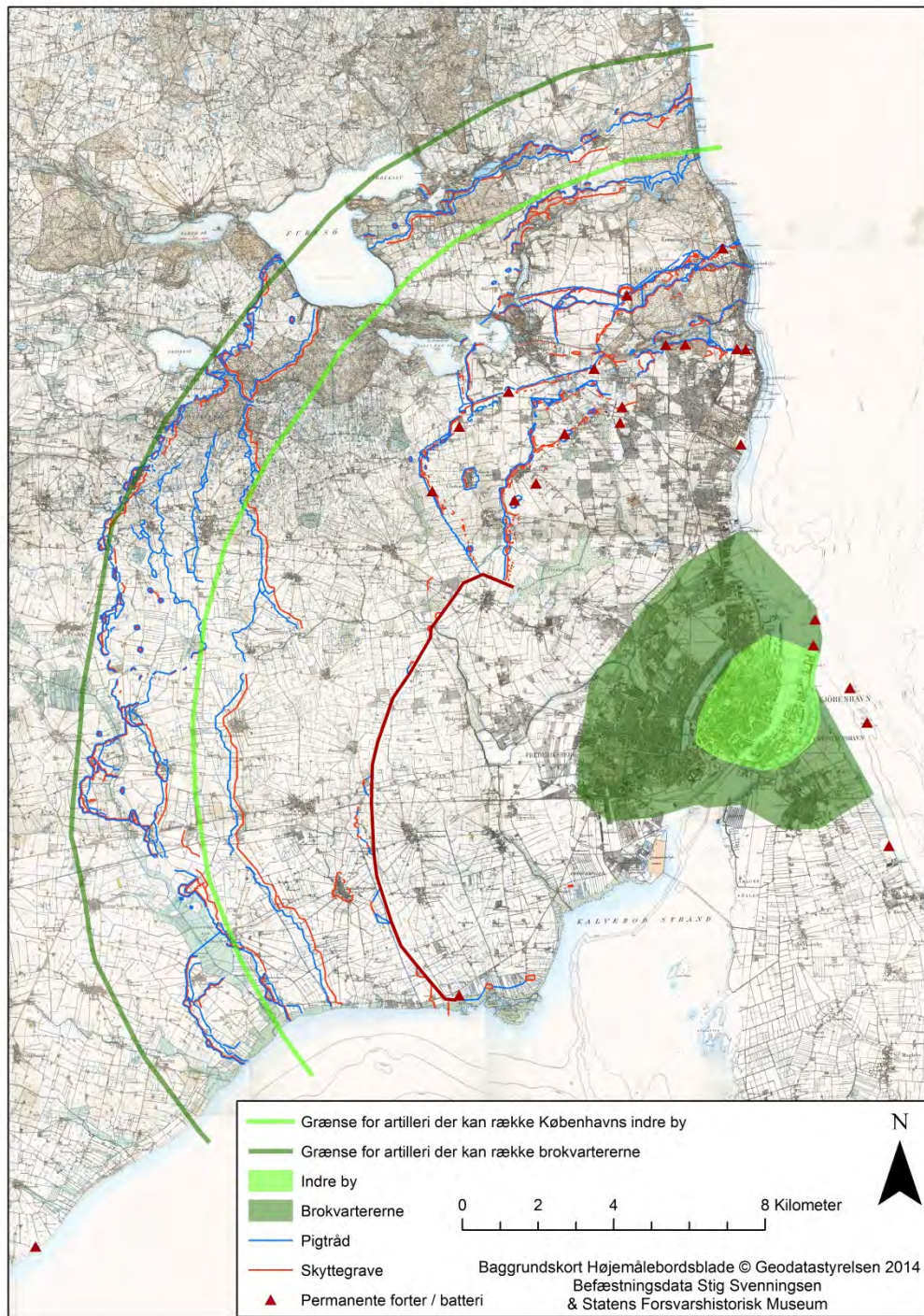


Sommerpanikken juni-september 1916

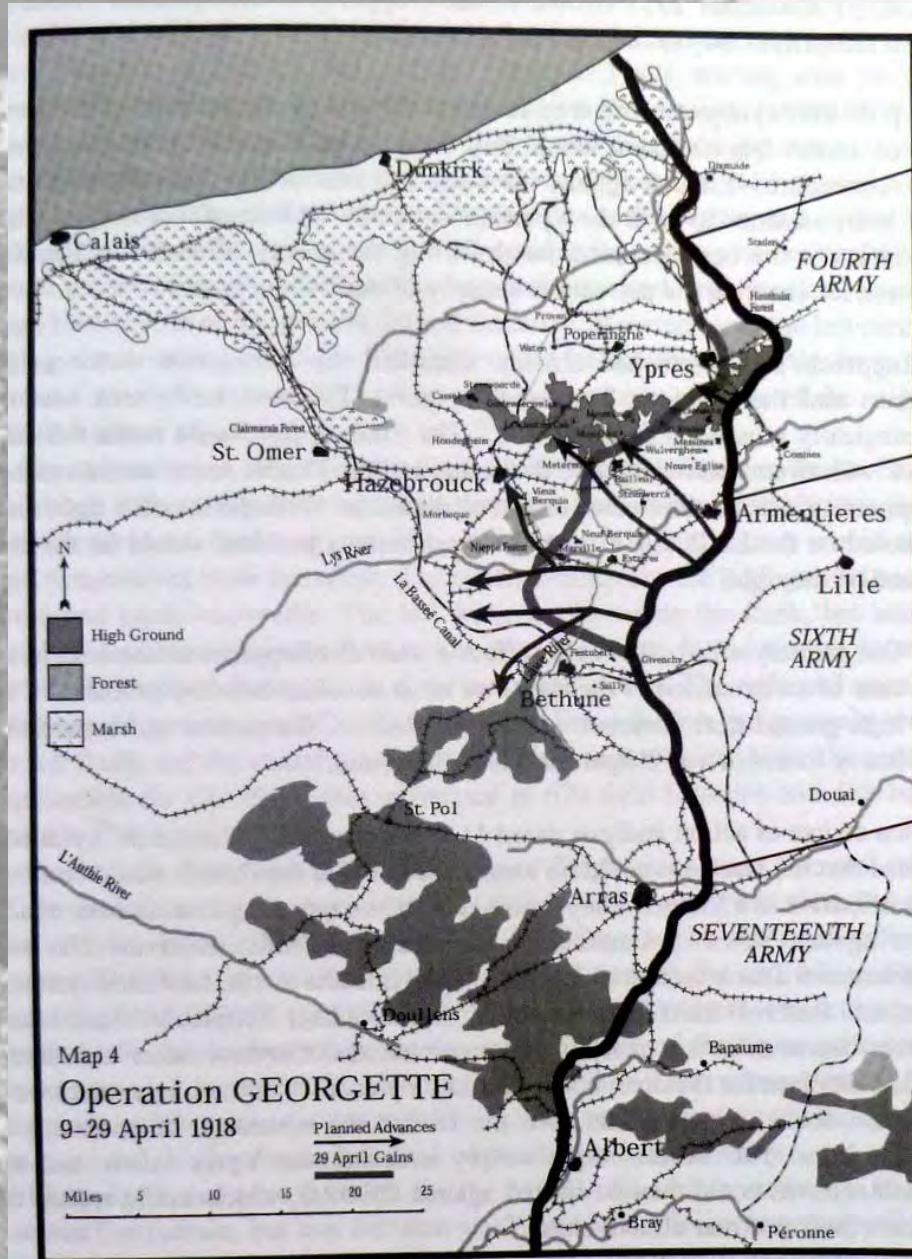


Ny tysk planlægning mod Danmark efteråret 1916 og i foråret 1917 og Danmarks reaktion





Forårskrisen 1918 og Danmarks reaktion



Hvorfor Danmark ikke blev inddraget

- Indtil sommeren 1916 på grund af den tyske hærs troppemangel, anderledes prioritering og veto mod krigsforberedelser mod Danmark.
- Derefter pga. held, kulminerende i begyndelsen af november 1917 og i maj 1918.